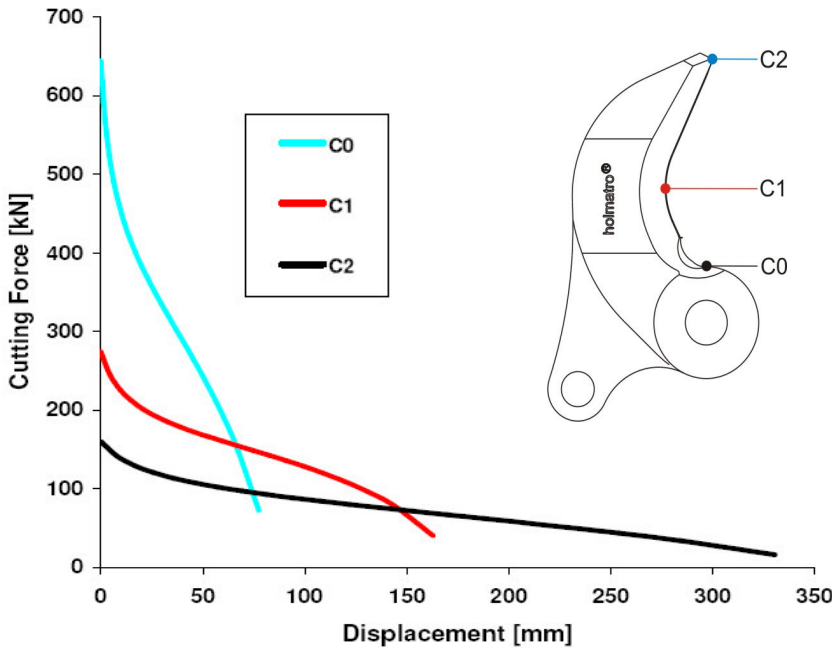
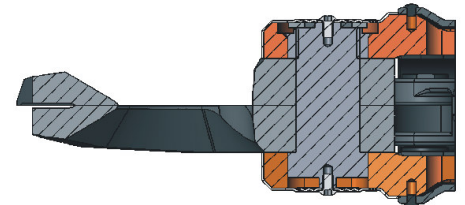


SPECIFICATIONS	
article number	170.012.048
equipped with	dual hoses
working pressure	500 bar
blade opening	181 mm
cutting force	644 kN / 65.6 t
shape of blade	90° blade angle
weight, ready for use	18.5 kg
dimensions (LxWxH)	739 x 270 x 218 mm
temperature reach	-20° + 80° C
torque main bolt	50 Nm
required oil contents	162 cc (effective)
EN 13204 classification	BC165 H-18.5
Standard with i-bolt central bolt construction	

ACCESSORIES	Art.no.
maintenance set	150.013.441
spare blade set	150.000.884
torque wrench, 40-200 Nm	150.581.671
ratcheted head for torque wrench	150.581.672
cap hexagon 41 mm	150.581.691

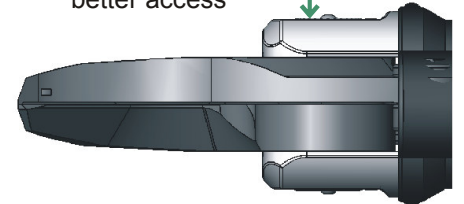


i-bolt central bolt construction



Squeezes blades directly for a superior cutting performance.

Flatter design for better access



Manufacturing sales & service worldwide

Holmatro Industrial Equipment
P.O. Box 33, 4940 AA Raamsdonksveer
The Netherlands
tel.: + 31 (0)162 - 58 92 00
fax: + 31 (0)162 - 52 24 82
e-mail: info@holmatro.com
homepage: www.holmatro.com

Manufacturing sales & service U.S.A., Canada and Latin America

Holmatro, Inc.
505 McCormick Drive, Glen Burnie, MD
21061
U.S.A.
tel.: + 1 - 410 - 768 - 9662
fax: + 1 - 410 - 768 - 4878
e-mail: info@holmatro-usa.com

© Holmatro® 0905

While the greatest care has been devoted to the content, it is possible that the information in this printed matter is incorrect or incomplete. Holmatro N.V. and its affiliated companies (hereafter: Holmatro) cannot be held liable in any way for the consequences of activities undertaken on the basis of this printed matter. If you have any doubts about the correctness or completeness on the information, you shall contact Holmatro (phone number: +31 (0)162-589200).

Nothing from this printed matter can be copied and/or made public in any way without the explicit authorization of Holmatro

